



# Florida Center for Behavioral Health Workforce

## **INTERIM REPORT**

**March 2025**

### **Submitted To:**

Governor Ron DeSantis  
Senate President Ben Albritton  
Speaker of the House Daniel Perez

# TABLE OF CONTENTS

<b>SECTION I – EXECUTIVE SUMMARY .....</b>	<b>4</b>
<b>SECTION II – BASELINE FINDINGS .....</b>	<b>5</b>
<i>Training and Licensed Workforce Resource Mapping .....</i>	<i>5</i>
<i>Age Distribution of Florida Licensed Behavioral Health Providers .....</i>	<i>8</i>
<i>New Active vs. Inactive Florida Behavioral Health Provider Licenses.....</i>	<i>9</i>
<i>Median Annual Income of Florida Behavioral Health Providers .....</i>	<i>11</i>
<i>Notes and Limitations.....</i>	<i>12</i>
<b>SECTION III – CURRENT PRIORITIES.....</b>	<b>13</b>
<i>Infrastructure Development .....</i>	<i>13</i>
<i>Research.....</i>	<i>13</i>
<i>Education and Professional Development.....</i>	<i>14</i>
<i>Policy Analysis .....</i>	<i>15</i>
<b>SECTION IV – POLICY &amp; IMPLEMENTATION RECOMMENDATIONS .....</b>	<b>16</b>
<i>Enabling Policy.....</i>	<i>16</i>
<i>Behavioral Health Workforce – Enhancing Policy.....</i>	<i>18</i>
<i>Implementation Recommendations .....</i>	<i>19</i>
<b>SECTION V - APPENDICES.....</b>	<b>21</b>
<i>Appendix A. FCBHW Infrastructure Development.....</i>	<i>21</i>
<i>Appendix B. Stakeholders Engaged to Date .....</i>	<i>23</i>
<i>Appendix C. Accredited Graduate Behavioral Health Programs .....</i>	<i>25</i>
<i>Appendix D. Accredited Post-Graduate &amp; Other Specialized Behavioral Health Programs.....</i>	<i>28</i>

## SECTION I – EXECUTIVE SUMMARY

The Florida Center for Behavioral Health Workforce (FCBHW)'s first annual legislative report was submitted in early January 2025 and primarily contained details of the FCBHW's implementation plan and initial strategic imperatives that emerged from stakeholder engagement and a limited scope data review. While we are continuing to build our infrastructure and strategic plan (Appendix A), we also understand the urgency and what is at stake – the time was *yesterday*, and a strong workforce equates to access to high quality services and supports when and where they are needed. As such, and in the time since, we have developed initial data-driven and community needs responsive priorities that were important to expeditiously disseminate. A summary of data findings and several Center research, education, and policy priorities are detailed within this interim report.

The task of growing, retaining, and innovating the behavioral health workforce is no “short order.” As we continue to introduce the Florida Center for Behavioral Health Workforce, we are consistently met with some variety of “*How can I help?*” The acknowledgement of the value and need for behavioral health through the state's commitment to its workforce and the spirit of collaboration from stakeholders (Appendices B, C, and D) across universities, across systems (e.g., community mental health, primary care, hospitals, schools, health and human services administrations), and across levels from local to state, consistently reveals not only what is possible, but what realistic and meaningful action can be taken. We look forward to sharing our priorities, initiatives, and progress through our annual legislative reports and on our website, which will launch in July 2025 with an interactive data dashboard, access to publications and resources, and a learning management system. In the meantime, and always, we welcome questions, recommendations, and collaboration -- [cbcs-fcbhw@usf.edu](mailto:cbcs-fcbhw@usf.edu).

## SECTION II – BASELINE FINDINGS

### *Training and Licensed Workforce Resource Mapping*

State resource mapping was conducted to analyze Florida’s educational and professional behavioral health workforce infrastructure, providing insights into capacity by geography and profession, strengths, and targetable opportunities to fill critical gaps. Appendix C displays the location of accredited graduate behavioral health programs across 24 Florida universities that satisfy the prerequisite educational experience for Florida licensure. While graduate training program resources exist across all 6 regions of Florida (as defined by the Florida Department of Children and Families<sup>1</sup>), the majority of training resources are located in the Central, upper Suncoast, Southeast, and Southern regions. The University of West Florida and Florida State University’s Panama City campus are the only two universities with one or more accredited graduate behavioral health programs located in a geographic health provider shortage area (HPSA) in the state. Ten Florida universities offer at least one accredited graduate program that can be completed fully online, barring the practice-based experience component which is coordinated in a community in proximity to the graduate student. The Master of Social Work (MSW) program is among the most represented of online graduate programs. A sizable number of population-based health provider shortage areas (HPSAs) have a graduate behavioral health program in the County.

Accredited doctoral, postdoctoral, and post-graduate specialization programs for psychology, psychiatry, and psychiatric mental health nurse practitioner have also been mapped out across the state by county and health provider shortage areas (HPSAs). These training programs largely cluster around the graduate training programs or within university, hospital, Veterans Affairs and correctional facilities across the state, largely to the benefit of individuals in urban areas or to individuals under special circumstances. Four of the seven areas with the greatest volume of predoctoral and postdoctoral psychology, psychiatry residency, and psychiatric mental health nurse practitioner training programs are home to the recently established behavioral health teaching hospitals.

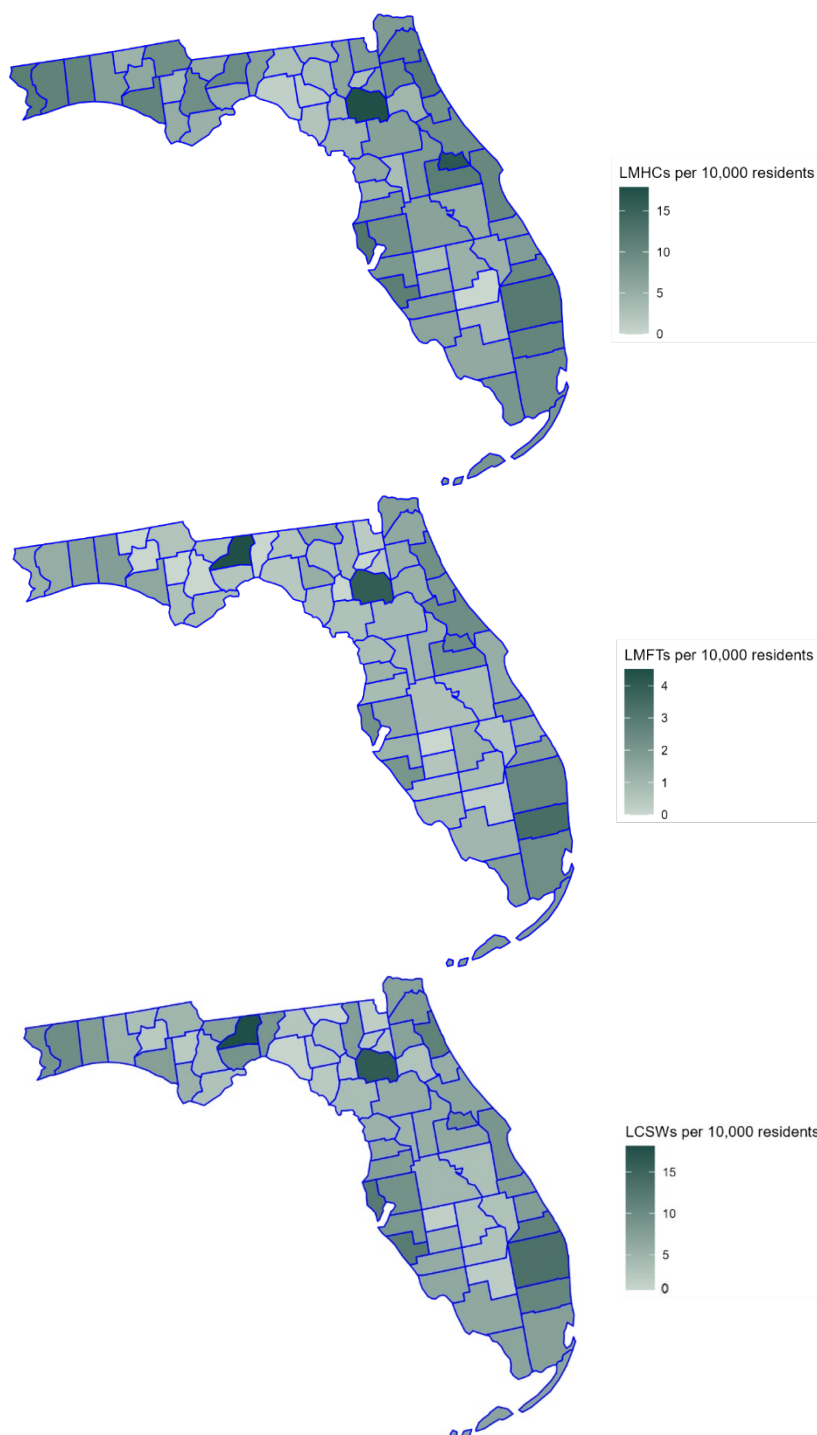
An examination of the available licensed behavioral health workforce by profession across Florida counties yields the same picture. Resources are largely surrounding the universities and post-graduate training sites, leaving vulnerabilities in access throughout the state.

The table in Appendix D provides population (per 10,000)-based rates of available licensed behavioral health providers across profession and by county. It further provides an

---

<sup>1</sup> <https://www.myflfamilies.com/news-events/department-regions-and-circuits>

aggregate of those providing psychotherapy services relative to prescriber functions. Please note, some psychiatrists provide psychotherapy in addition to providing medication management. While every county has a licensed behavioral health provider able to provide psychotherapy, five Florida counties have no psychiatry or psychiatric-mental health nurse practitioner (PMHNP) and seven additional counties have less than one per 10,000.

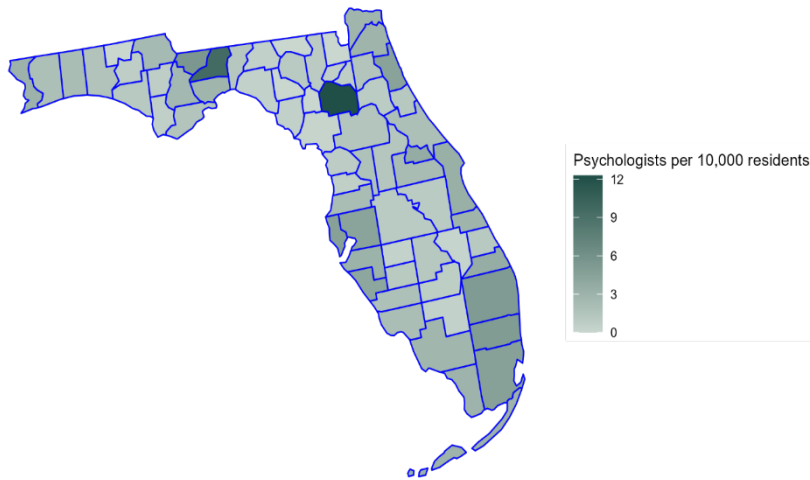


An examination of master's level licensed behavioral health providers shows variability in distribution in line with urbanicity versus rurality and presence of academic institutions versus "deserts" as noted, though there is only one county without a licensed mental health counselor (LMHC) and licensed clinical social workers (LCSWs) are represented in all Florida counties.

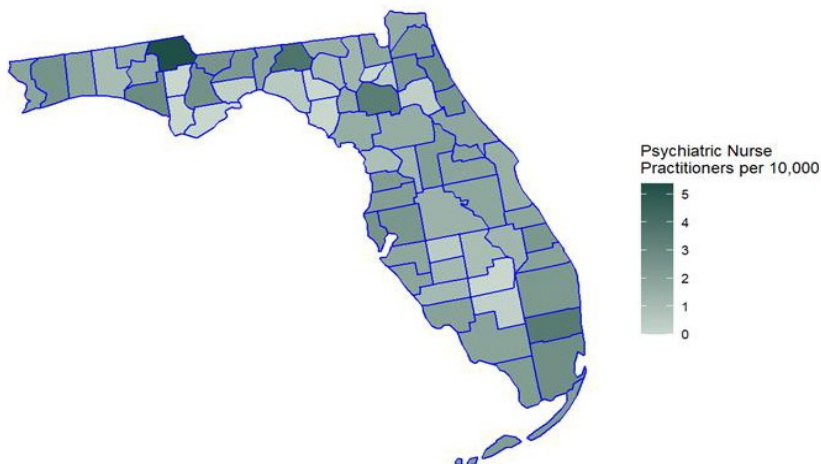
The largest concentration of LMHCs and LCSWs are in the Leon, Duval, Alachua, Hillsborough, Orange, Palm Beach, Broward, and Miami-Dade areas. Relative to licensed marriage and family therapists (LMFTs) and licensed psychologists, LMHCs and LCSWs are the most abundant of the licensed, non-prescribing behavioral health workforce.

There is relatively low availability of LMFTs across Florida, which tracks with a lower

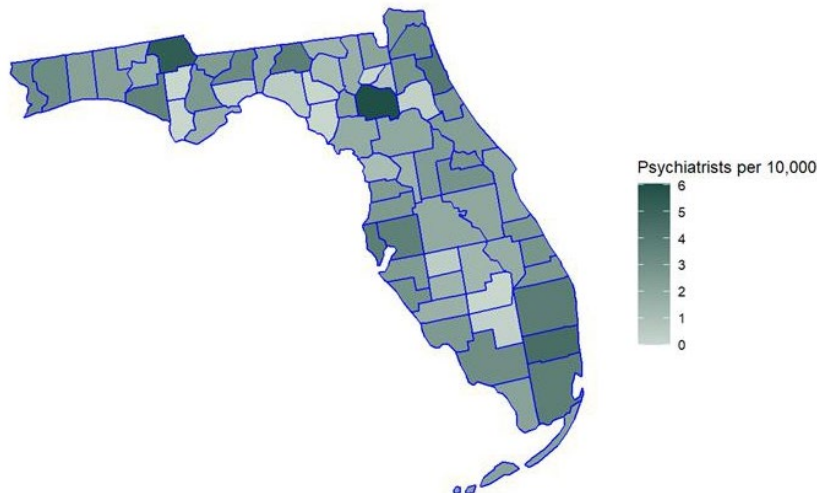
number of accredited graduate training programs for this specialization in the state. Eight Florida counties have no LMFTs available, and an additional twenty-five have less than one per 10,000.



Five Florida counties have no available licensed psychologists and 17 counties have less than one per 10,000. The highest concentration of psychologists are in Alachua, Leon, Hillsborough, Broward, and Miami-Dade county.



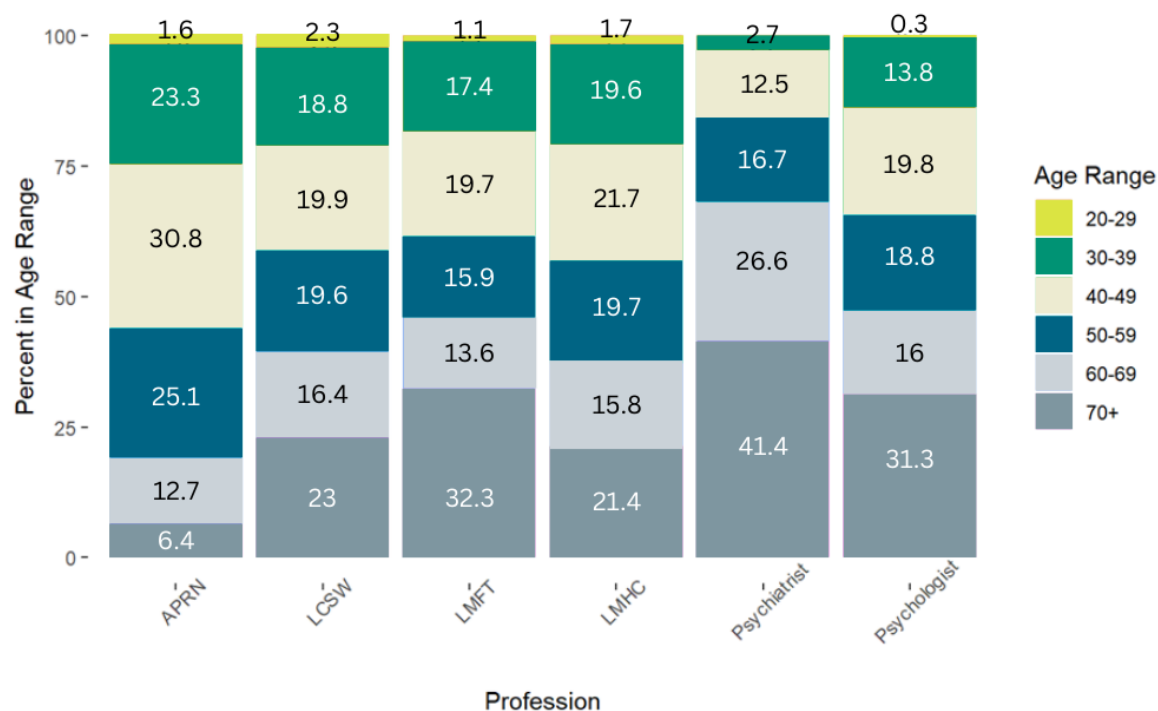
Psychiatric-mental health nurse practitioners (PMHNPs) and psychiatrists follow the same geographic and landmark patterns. One exception is the high volume of both PMHNPs and psychiatrists in Jackson County, which may be attributable to the presence of a state prison. Seven Florida counties had no PMHNPs and eight had less than one per 10,000.



Psychiatrists fared worse than any of the other six licensed behavioral health professionals, with 17 counties without a resident psychiatrist and an additional 28 with less than one per 10,000.

## Age Distribution of Florida Licensed Behavioral Health Providers

Understanding the age distribution of the licensed behavioral health workforce is crucial for predicting future workforce supply and ensuring the stability of the profession. An examination of licensee data from the Florida Department of Health reveals psychiatric-mental health nurse practitioners (PMHNPs) have the greatest representation of younger age adults (e.g., 24.9% < 40). Over 55% of the available PMHNP workforce is under the age of 50. This is true generally, but is in particular contrast to psychiatrists, their prescriber counterparts. Given the length of time required to obtain a medical degree and post-graduate specialization, it is not unexpected that no Florida psychiatrists would be in their 20s; however, the fact that only an estimated 2.7% of psychiatrists in Florida are in their 30s and 41.4% are in retirement age (i.e., 70+) is quite concerning for the longevity of the profession without intentional action. Albeit not to the same degree, this is also true of psychologists who enter the profession slightly older relative to master's level behavioral health providers and who are generally older (i.e., 70+: 31.3%), with the exception of marriage and family therapists (i.e., 70+: 32.3%). Overall, these findings only further support the State's investment in psychiatry residencies and postdoctoral psychology fellowships through the establishment and funding of Behavioral Health Teaching Hospitals.



**Note.** The highest categories were collapsed into a category of “70+” for purposes of this analysis and visualization.

Similar to PMHNPs, the age distribution of LMHCs and LCSWs is quite favorable for the stability of the profession. Though slight, LCSWs have the youngest entry of the licensed behavioral health professionals (i.e., 20 – 29: 2.3%), which is likely attributable to the availability of an accredited accelerated Master of Social Work course of study for individuals holding a Bachelor of Social Work degree.

Please note, an examination of age distribution of the available licensed behavioral health workforce is relevant only to the degree it can provide insight into projected workforce supply over time. The field is strengthened by the seasoned providers who are qualified and continue to competently and effectively practice beyond retirement-eligible age, as well as the “non-traditional” or “second career” individuals who enter the field later in life.

### ***New Active vs. Inactive Florida Behavioral Health Provider Licenses***

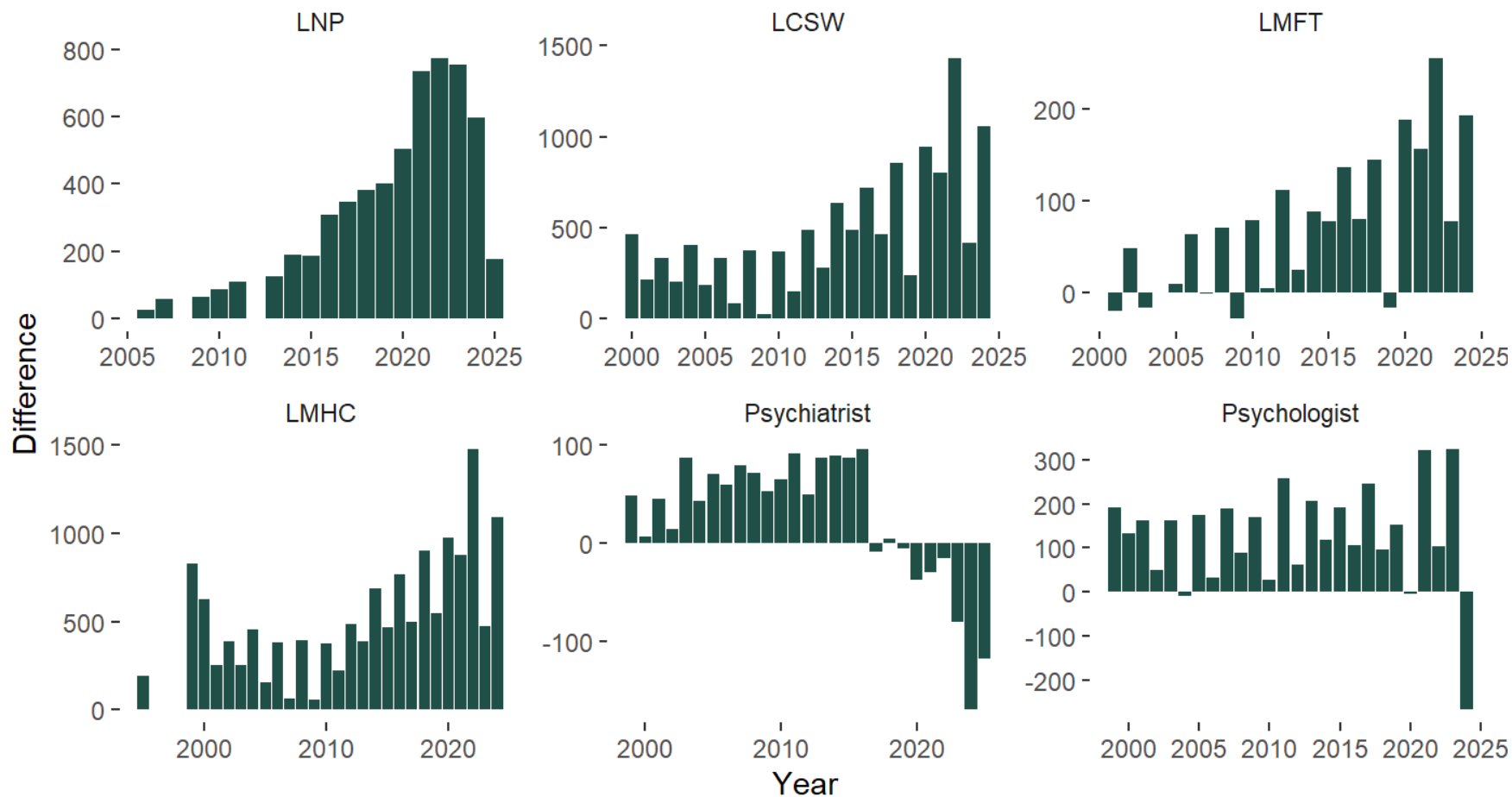
The number of new licenses issued each year for a given behavioral health professional relative to the number of licenses moving from a “Clear Active” status to an inactive status (e.g., “Null and Void,” “Suspended” “Retired”) were examined. While overall there have been more licenses becoming active than inactive for behavioral health providers, there is a notable exception for psychiatrists in which there has been a net loss since 2018, another indication of the challenges and threats to psychiatry in Florida.

Psychiatric-mental health nurse practitioners (PMHNPs) demonstrate a significant net positive growth over the past nearly 10 years, from approximately 200 in 2015 to nearly 800 in 2023. LMHCs, LMFTs, and LCSWs too have had a net positive and rising trend, with a peak in 2022. This increase has been steady for LMHCs and LCSWs, which have the highest rates of newly issued licenses of the six licensed behavioral health providers examined. LMFTs remain the slowest growing of the three master’s level psychotherapists and psychologists, though there has been a slight positive trend overall over the past decade. Consistent with this, they were also the oldest of the four psychotherapist types and had the second smallest representation of young adults. Psychologists have largely had net positive of licensed providers year-to-year, though there has been little significant sustained growth over the past 20 years. In 2024, there was a substantial (i.e., > 200) loss and net negative growth of psychologists. A further examination reveals a significant rise in “Delinquent” and “Null and Void” license statuses which equates to a psychologist not renewing a license by the expiration date or for two renewal cycles.<sup>2</sup>

---

<sup>2</sup> Florida Department of Health. (n.d.). **Licensure status lookup**. Retrieved March 10, 2025, from <https://mqa-internet.doh.state.fl.us/MQASearchServices/LicStatus.html>

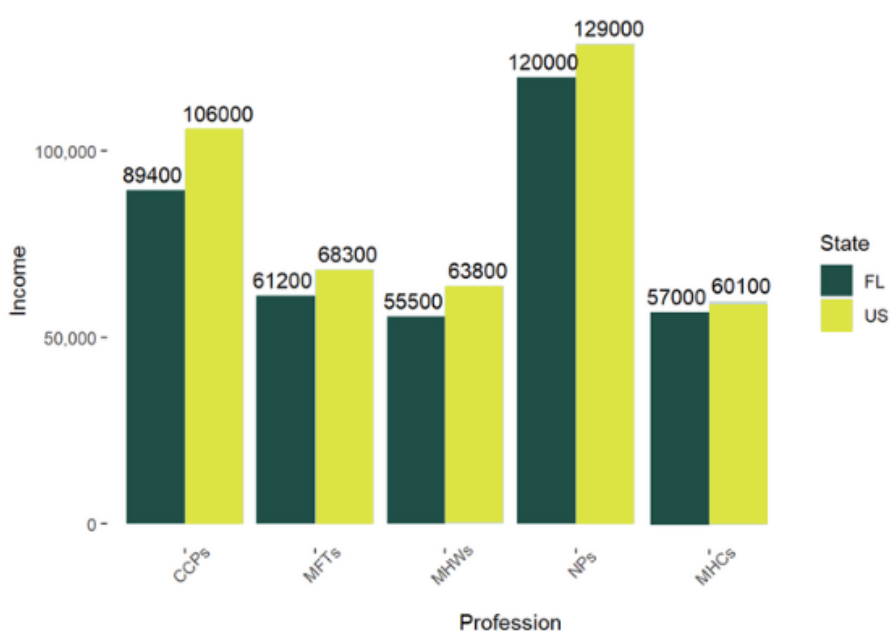




**Note.** Difference between new active relative to inactivated Florida behavioral health provider licenses.

## Median Annual Income of Florida Behavioral Health Providers

In 2023, the median household income in Florida was \$73,300<sup>3</sup>. According to U.S. Bureau of Labor Statistics (2023, May)<sup>4</sup>, annual wage estimates for mental health counselors, marriage and family therapists, and clinical social workers fell well below this Florida median (i.e., MHC = \$57,000, MFT = \$61,200, MSW = \$55,500) and below the living wage (i.e., \$47.53 or \$98,862) to support households with one adult and two children, even in the most affordable of Florida counties (i.e., \$34.59 hourly wage). An examination of data from the State University System of Florida (2023-2024)<sup>5</sup> suggests graduates of these three clinical masters programs continue to earn less than this median household income at 10 years post-graduation (i.e., MHC = \$71,500, MFT = \$75,400, MSW = \$66,600). Both psychologists (i.e., \$89,400) and psychiatric-mental health nurse practitioners (PMHNPs; i.e., \$120,000) were above the median income; however, only PMHNPs met the living wage for a single adult, two child household. Income data for psychiatrists was not available for examination.



**Note.** From U.S. Bureau of Labor Statistics (2023) State Occupational Employment and Wage Estimates by state. U.S. annual income statistics calculated as the weighted median of all 50 states and territories. CCPs = Clinical & Counseling Psychologists; MFTs = Marriage & Family Therapists; MHWs = Mental Health & Substance Abuse Social Workers; NPs = Nurse Practitioners; MHCs = Substance Abuse, Behavioral Disorder, & Mental Health Counselors. Nurse Practitioner income is across specialties and is not available at the behavioral health specialty level. Data not available for psychiatrists.

<sup>3</sup> University of Wisconsin Population Health Institute. (2025). *Florida health data*. Retrieved March 19, 2025 from <https://www.countyhealthrankings.org/health-data/florida?year=2025>

<sup>4</sup> U.S. Bureau of Labor Statistics. (2025). *Occupational employment and wage statistics: Florida*. Retrieved March 10, 2025 from [https://www.bls.gov/oes/current/oes\\_fl.htm#otherlinks](https://www.bls.gov/oes/current/oes_fl.htm#otherlinks)

<sup>5</sup> State University System of Florida Board of Governors. (2025). *My Florida Future dashboard*. Retrieved March 21, 2025 from <https://www.flbog.edu/myfloridafuture/my-florida-future-dashboard>

Relative to the U.S. more broadly, the median income for five of the behavioral health professions (psychiatrists excluded due to unavailable data) were 5.16% (mental health counselor) to 15.66% (psychologist) lower. This is despite the moderately high cost of living in Florida, with Florida ranked 18<sup>th</sup> in the U.S. in a 2024 cost of living index (i.e., 102.8).<sup>6</sup>

### ***Notes and Limitations***

There are several important data considerations and limitations to note. County population-rate, “new” versus licenses “lost,” and age-related data were derived from an examination of publicly accessible data through the Florida Department of Health (DOH) Division of Medical Quality Assurance (MQA) & Public Health. This behavioral health provider workforce data represents the number of *available*, license-holding professionals; however, it does not guarantee a licensed professional is actively providing services. Furthermore, the Florida Department of Health licenses physicians and nurse practitioners. They do not issue a psychiatrist or psychiatric-mental health nurse practitioner (PMHNP) license; rather, these credentials are issued by a professional board and are self-reported to the Department of Health in a practitioner profile. For the purposes of these analyses, psychiatrists and PMHNPs were determined by merging profile data with license data for those self-reporting holding these board designations, and though a requirement, missing data is noted. As such, the numbers reported may underrepresent the actual number of these behavioral health professionals. Furthermore, physician assistants (PAs) may hold qualifications in mental health; however, they do not currently have the option or mandate to similarly complete the practitioner profile and therefore their contribution to the behavioral health workforce cannot be determined.

While population by provider rates are reported at the county level, it is not uncommon for providers to practice regionally across county lines so access may be better in some instances than analyses suggest; however, transportation barriers, internet connectivity for telehealth services, and the like may create barriers to the utilization of neighboring clinical resources.

---

<sup>6</sup> World Population Review. (2025). *Cost of living index by state*. Retrieved March 21, 2025 from <https://worldpopulationreview.com/state-rankings/cost-of-living-index-by-state#title>

## SECTION III – CURRENT PRIORITIES

### *Infrastructure Development*

We continue to move forward with key aspects of our implementation plan (Appendix A), including strategic planning, impaneling advisory councils, and the development of our team. We are moving toward the July 01, 2025, target launch of our website which will house an interactive data dashboard, a learning management system, and publications and resources.

### *Research*

Addressing Barriers to the LCSW Licensure Exam Pathway in Florida. While there are acknowledged limitations associated with the ASWB exam, the sole national licensing exam for clinical social workers, Florida social workers pass at a disparately low level relative to states similar in size and with similar demographics<sup>7</sup>. This was noted as a point of concern by the Florida Board of Clinical Social Work, Marriage and Family Therapy, and Mental Health Counseling in their December 2024 general business meeting. In 2023, only 53.6% of first-time test takers passed the exam and only 24.8% of repeat test takers passed. In effect, this causes delays in the licensure process for many and precludes others from becoming fully and independently licensed, despite the significant time and financial investment, qualified skills, and dedication to service. We have commissioned a team of social work researchers to conduct qualitative and quantitative inquiries with graduate Master of Social Work (MSW) students, registered clinical social work interns (RCSW-I), licensed clinical social workers (LCSWs), behavioral health organization leaders, and graduate educators as it relates to resources and barriers, exam preparation supports, clinical supervision, exam limitations, and other licensure needs.

Retention. To understand factors impacting the retention of licensed behavioral health professionals, our team of researchers have developed a survey that will be disseminated at the end of March 2025. Results will be analyzed, disseminated, and reviewed to inform actionable strategies to promote retention.

---

<sup>7</sup> Association of Social Work Boards. (n.d.). **ASWB exam pass rates by state/province.** Retrieved January 27, 2025, from <https://www.aswb.org/exam/contributing-to-the-conversation/aswb-exam-pass-rates-by-state-province/>

Notice of Funding Opportunity. To accelerate our research, as well as to engage faculty and communities in this understudied subfield of empirical inquiry, we have disseminated a call for research proposals to support innovative and groundbreaking research that is immediately relevant, aligned with the priorities delineated in statute, and that will inform the development and sustainability of a qualified Florida behavioral health workforce. The Center will provide grants up to a maximum amount of \$150,000 for this initiative and the Center Research Advisory Group will make decisions based upon the applicant's justification, critical value of the proposal for Florida workforce development, the quality of the proposal, and match to Center goals.

### ***Education and Professional Development***

Learn Where You Live. Preliminary findings demonstrate critical provider shortages and limited educational resources in many rural areas of Florida, as well as the tendency of licensed behavioral health providers to remain in these immediate or surrounding areas. A key priority will be targeting geographic health provider shortage areas (HPSAs) to promote education access and career pathways for rural residents, leveraging existing educational institutions (e.g., high schools, community colleges), online undergraduate and accredited graduate programs, and safety net community agencies (e.g., federally qualified health centers, community health centers) to promote and incentivize individuals learning where they live and work.

Mentoring. We are currently developing and will pilot the "FCBHW NextGen Mentorship Program" in Fall 2025 which will engage rising undergraduate seniors majoring in a behavioral health-oriented degree program and with demonstrated plans to attend a Florida behavioral health clinical master's degree program upon graduation. Over the course of an academic year, mentees will participate in monthly professional development didactics, as well as a monthly meeting with a matched licensed professional mentor. Both mentee (\$5,000) and mentor (\$1,000) will receive a stipend for participating, although the mentor may forego the stipend and receive 25 volunteer hours in support of their Florida Reimbursement Assistance for Medical Education Program (FRAME) application.

Registered Intern and Qualified Supervisor Education. Attendance at and consultation with the Florida Board of Clinical Social Work, Marriage and Family Therapy, and Mental Health Counseling highlights the immediate need for additional training and education campaigns for registered interns and qualified supervisors. Several concerns have been identified that have implications for obtaining the qualifying clinical and supervisory experience and the unintentional engagement in unlicensed activity. The FCBHW

Education and Professional Development Core will be developing and disseminating this information in the near future.

Evidence-based Family Intervention. As our review of the data demonstrates, there are relatively few graduate training programs in marriage and family therapy, a low volume of licensed marriage and family therapists in Florida overall, and a poor distribution of this limited resource across Florida counties. Despite this, Florida Managed Medicaid (MMA) are working to promote the delivery of evidence-based family therapy practices through an incentive program. In line with this, and in an effort to create access and promote care quality and the effective utilization of personnel resources, the FCBHW Education and Professional Development Core will be developing online education in select evidence-based family therapy modalities to provide Florida licensed behavioral health providers with this specialized training.

### ***Policy Analysis***

Scope of practice. As we explore opportunities for leveraging behavioral health paraprofessionals as care extenders, as well as creating career pipelines and ladders, it is necessary to examine scope of professional practice as currently established in statute and administrative code across agencies (e.g., Medicaid, DCF), as well as the feasibility and sustainability of roles (e.g., bachelors level certificate holders, community health workers, etc.) within the current reimbursement landscape.

Interstate compacts. PSYPACT is the only actively operational behavioral health interstate compact in Florida to date. At present time, 946 PSYPACT enrolled psychologists are registered with Florida as their required “home” state. An additional 291 PSYPACT holders possess a Florida license, although Florida is not their primary or “home” license state. There was a substantial increase in Florida license holding PSYPACT psychologists in 2023 (i.e., 487, relative to 23 in 2022) and this decreased slightly in 2024 (i.e., 330). The Counseling Compact is currently in the implementation phase and the Social Work Licensure Compact is currently being considered. Research is necessary to examine the impact of interstate compacts on access to care for Floridians.

## SECTION IV – POLICY & IMPLEMENTATION RECOMMENDATIONS

### *Enabling Policy*

The following policies are recommended for consideration to meet the objectives delineated in F.S. 1004.44 (6)(c).

**SB 1620 (2025)** pertaining to F.S. **1004.44 6(a)** Louis de la Parte Florida Mental Health Institute, Florida Center for Behavioral Health Workforce. Related companion legislation HB 1439.

- As written (*Section 4, Line 395*), recommendation to expand the Center’s mandated tasks to include a biennial behavioral health workforce compensation and benefits analysis with associated recommendations for funding programs to support workforce growth and retention.

*“Analyze compensation and benefit data biennially to identify factors that have led to the shortage of behavioral health workers in this state and make recommendations for funding programs to support the growth and retention of the behavioral health workforce, such as stipends or other financial support for clinical supervisors, workers, interns, and students currently working in the field of behavioral health.”*

- Recommendation to strike *Section 5, Line 402*. This is achieved as written in F.S. 1004.44 6(b).
- As written (*Section 6, Line 409*), and in parallel for existing legislation for physicians (i.e., s. 381.4018 and s. 458.3191), recommendation to direct the completion of a **behavioral health workforce survey** at the time of initial licensure and license renewal for psychologists licensed under chapter 490 and social workers, marriage and family therapists, and mental health counselors licensed under chapter 491.

*“Develop and routinely analyze a behavioral health workforce survey to increase insight into service provision and access, inform priorities that support retention, strategically address critical gaps, and inform workforce-related policy decisions.”*

*The survey should solicit information including but not limited to:*

- a. The frequency and geographic location of practice.*
  - b. Participation in interjurisdictional practice and percentage of Florida and non-Florida residents served.*
  - c. Practice setting and populations served, including availability for critically needed services.*
  - d. Percentage of time spent in direct patient care.*
  - e. Compensation and benefits.*
  - f. Anticipated change to license or practice status.”*
- Consistent with s. 464.019 for nursing education, direct Florida behavioral health graduate education programs to provide program-specific data to the Florida Center for Behavioral Health Workforce.

*“Assess and monitor the Florida educational system’s capacity to meet projected workforce demands. Florida institutions with psychology, clinical social work, marriage and family therapy, and mental health counseling practice-based graduate programs in Florida shall annually provide the Center information including but not limited to:*

- a. Accrediting body.*
  - b. Number and type of programs.*
  - c. Number of current faculty and faculty vacancies.*
  - d. Number of student slots available.*
  - e. Number of student applications submitted, number of qualified applicants, and acceptance rate.*
  - f. The number of program graduates.*
  - g. Program retention and time of completion rates of students tracked from program entry to graduation.*
  - h. Passage rates of post-graduate professional licensing examinations.*
  - i. Practice setting post-graduation (as available).”*
- Regarding Section 4, Line 395, we welcome the expanded scope directive to include a biennial workforce compensation analysis with associated recommendations for program funding to support workforce growth and retention.



**SB 1540 (2025)** pertaining to the practice of Physician Assistants, ss. 458.347 and 459.022, F.S.

- Related to Section e, Line 352, recommendation to require a Physician Assistant to complete a practitioner profile (s. 456.041) with Certificate of Added Qualifications (CAQ) documented. This would allow Physician Assistants specializing in psychiatry to be identified and examined as a part of the behavioral health workforce.

### ***Behavioral Health Workforce – Enhancing Policy***

**SB 122 (2025) & HB 361 (2025)** pertaining to the renaming of “registered interns” in mental health counseling, marriage and family therapy, and clinical social work professions.

- Recommendation to reclassify “registered interns” to “registered associates” for mental health counseling, marriage and family therapy, and clinical social work professions as proposed.

This change in language is more representative of the qualified experience and skills of a post-master’s level behavioral health professional, as well as the collaborative method in which they clinically practice under the supervision and license of their qualified supervisor. Furthermore, the term “intern” is routinely used interchangeably across levels of training (e.g., practicum “intern” clinical experience en route to master’s degree, post-graduate “registered intern,” etc.) and can be confusing for service consumers, non-clinical staff, and the broader public to understand the nature of the experience and scope of practice in which “interns” can (or cannot) practice.

- With regards to removing the requirement that a licensed mental health professional be present on the premises when a “registered associate” (formerly “registered intern”) is providing clinical services in a private practice setting, recommendation in support of this proposed change. The determination as to whether a licensed mental health professional be present on site should be based on a qualified supervisor’s considerations for the client’s(s’) and registered associate’s health, safety, or welfare, not practice setting. Qualified supervisors should have a protocol and safety plan developed and communicated with the registered associate (formerly “registered intern.”) irrespective of the setting method of clinical service delivery (e.g., in person, virtual/telehealth).

## **SB 220 & CS/HB 27 (2025)** pertaining to the Social Work Licensure Interstate Compact

- Recommendation to pass legislation to implement and operate the Social Work Licensure Compact in Florida, as has been done with the Counseling Compact (Implementational phase) and Psychology Interjurisdictional Compact (PSYPACT; Operational phase). While further research is needed on behavioral health interstate compacts as it relates to access to care for Floridians, it is necessary to ensure parity in practice and economic opportunities across behavioral health professionals.

### **No Current Legislation**

- Regarding s. 409.91256, the Training, Education, and Clinicals in Health (TEACH) Funding Program, recommendation to broaden “Behavioral health students” to include:
  - Registered interns (or “registered associates” if bill changes adopted) in mental health counseling, marriage and family therapy, and clinical social work.
  - Postdoctoral psychology fellows.

Federally qualified health centers, community mental health centers, rural health clinics, and certified community behavioral health clinics are the most prominent employers and clinical preceptors for these levels of behavioral health professionals. A Qualified Supervisor is required to provide *at least* 100 hours of supervision in no less than 100 weeks and supervision must be received *at least* one hour every two weeks for a registered intern (or “registered associate”) in mental health counseling, marriage and family therapy, or clinical social work (64B4-2.002). Postdoctoral psychology fellows must receive an average of at least two hours of clinical supervision each week (over a one-year full time or two-year part-time experience), at least one hour of which must be individual supervision (64B19-11.005). At all levels, clinical supervisors are also required to be available on demand for consultation and safety assessment and planning, as well as to review and sign off on all clinical documentation. Overall, the level of clinical and administrative oversight as a qualified supervisor of these professionals is steep, albeit necessary, and is associated with high administrative costs and lost revenue in service to the profession and populations served.

### ***Implementation Recommendations***

Accredited Florida-based medical schools should establish or expand partnerships with hospital systems in academic and service gap areas and pursue Behavioral Health

Teaching Hospital designation. This will significantly increase access to high quality behavioral health services, as well as create infrastructure and pipelines for workforce in currently under-resourced rural regions, particularly as there is a notable pattern of workforce resources clustering in areas surrounding academic institutions. Behavioral Health Teaching Hospitals and/or current psychiatry residencies and postdoctoral psychology fellows should also consider the development of strategic partnerships in rural regions to leverage remote consultation and telehealth services to provide direct patient access and/or to support and enhance primary care providers' capacity to manage psychiatric conditions, as has been done with the Florida Pediatric Mental Health Collaborative<sup>8</sup>. Existing models for psychiatric consultation for pediatric populations in Florida should be expanded to include adults, as is being done by University of Florida Health Jacksonville. Furthermore, the Florida Agency for Healthcare Administration (AHCA) should prioritize grant funding to programs that incentivize and offer flexible, creative solutions to address workforce and service gaps in rural regions.

---

<sup>8</sup> <https://www.floridahealth.gov/programs-and-services/childrens-health/cms-specialty-programs/title-5-program/Behavioral-Health-Services/index.html>

## SECTION V - APPENDICES

### Appendix A. FCBHW Infrastructure Development

	Preliminary <sup>9</sup> (04/ - 06/ 2024)	07/2024 <sup>10</sup>	08/2024	09/2024	10/2024	11/2024	12/2024	01/2025	02/2025	03/2025	04/2025	05/2025	06/2025	07/2025	08/2025	09/2025	10/2025	11/2025	12/2025	Ongoing
	COMPLETED										PLANNED / ONGOING									
<b>Foundational Research</b>																				
Literature Review	x	x	x	x	x															x
Consultation with Like Centers	x	x	x	x	x	x	x	x	x	x	x	x	x	x	x	x	x	x	x	x
Joining Behavioral Health Workforce Center Alliance (BHWCA)							x	x												x
Key Stakeholder Engagement					x	x	x	x	x	x	x	x	x							x
<b>Strategic Planning</b>																				
Strategic Cores	x	x	x	x	x	x														
Organizational Structure	x	x	x	x	x	x														
Development of Strategic Planning						x	x	x	x	x	x	x	x							
Fiscal Year Budget							x				x	x	x							
<b>Recruitment &amp; Onboarding</b>																				
Executive Director	x	x	x	x	x															
Other Core Administrative Personnel	x	x	x	x	x	x	x	x	x	x	x	x	x	x	x	x				
Core Faculty Personnel						x	x							x	x	x	x	x		x
Advisory Councils											x	x	x							
<b>Communication &amp; Dissemination</b>																				
Branding							x	x	x	x										
Temporary Website Launch							x													
Website Design & Development								x	x	x	x	x	x							

<sup>9</sup> SB 330 approved by Governor 03/21/2024.

<sup>10</sup> SB 330 effective 07/01/2024.

	Preliminary <sup>11</sup> (04/ - 06/ 2024)	07/2024 <sup>12</sup>	08/2024	09/2024	10/2024	11/2024	12/2024	01/2025	02/2025	03/2025	04/2025	05/2025	06/2025	07/2025	08/2025	09/2025	10/2025	11/2025	12/2025	Ongoing
	COMPLETED										PLANNED / ONGOING									
<b>Behavioral Health Teaching Hospitals</b>																				
Consultation Agreements		x												x						x
Data Exchange														x						x
Best Practices Collaboration											x	x	x	x	x	x	x	x	x	x
<b>Data Analytics</b>																				
Identify & Access State-wide Data Sources				x	x	x	x	x	x	x										
Data Management & Analysis							x	x	x	x	x	x	x							x
Baseline Data Reporting														x						

<sup>11</sup> SB 330 approved by Governor 03/21/2024.

<sup>12</sup> SB 330 effective 07/01/2024.

## **Appendix B. Stakeholders Engaged to Date**

### **FLORIDA STATE AGENCIES, LICENSING BOARDS, & COMMITTEES**

Florida Agency for Health Care Administration (AHCA); *Bureau of Health Facility Regulation, Bureau of Medicaid Program*  
Florida Board of Clinical Social Work, Marriage & Family Therapy and Mental Health Counseling  
Florida Board of Nursing  
Florida Board of Psychology  
Florida Department of Children & Families; *Office of Substance Abuse & Mental Health, Regional Directors*  
Florida Department of Health (DOH); *Division of Medical Quality Assurance & Public Health, Division of Public Health Statistics and Performance Management*  
Florida House of Representatives; *Subcommittee on Children, Families, & Seniors*

### **PROFESSIONAL CERTIFICATION BOARDS**

Florida Certification Board

### **FLORIDA LIKE & RELATED CENTERS & INITIATIVES**

CareerSource Florida  
Florida Center for Inclusive Communities (FCIC)  
Florida Center for Nursing  
Florida Institute for Child Welfare  
Florida Pediatric Mental Health Collaborative, University of South Florida Hub  
School Mental Health Collaborative: Research, Training, and Technical Assistance Center (SMHC Center)

### **STATE ASSOCIATIONS**

Florida Academy of Physician Assistants (FAPA)  
Florida Association for Behavioral Analysis (FABA)  
Florida Association for Community Health Centers (FACHC)  
Florida Association of School Psychologists (FASP)  
Florida Behavioral Health Association (FBHA)  
Florida Chamber of Commerce  
Florida College Access Network (FCAN)  
Florida Counseling Association (FCA)  
Florida Hospital Association (FHA)  
Florida Mental Health Advocacy Coalition (FLMHAC)  
Florida Mental Health Counselors Association (FMHCA)  
Florida Psychological Association (FPA)  
Florida School Counselor Association (FSCA)  
National Alliance on Mental Illness, Florida Chapter (NAMI Florida)  
National Association of Social Work, Florida Chapter (NASW – FL)

### **BEHAVIORAL HEALTH TEACHING HOSPITALS**

Jackson Memorial Hospital  
Tampa General Hospital  
University of Florida (UF) Health Jacksonville  
University of Florida (UF) Health Shands Hospital

#### MANAGED CARE ORGANIZATIONS & INITIATIVES

Aetna Better Health of Florida  
Central Florida Behavioral Health Network, Inc.  
Statewide Medicaid Managed Care (SMMC) Roundtable  
Sunshine Health

#### COUNTY/REGIONAL ORGANIZATIONS & INITIATIVES

BeWell Palm Beach County  
Collier Coalition for Healthy Minds Mental Health Collaborative  
Crisis Center of Tampa Bay  
Evora Health  
Juvenile Welfare Board of Pinellas County  
Live Tampa Bay  
The School District of Palm Beach County

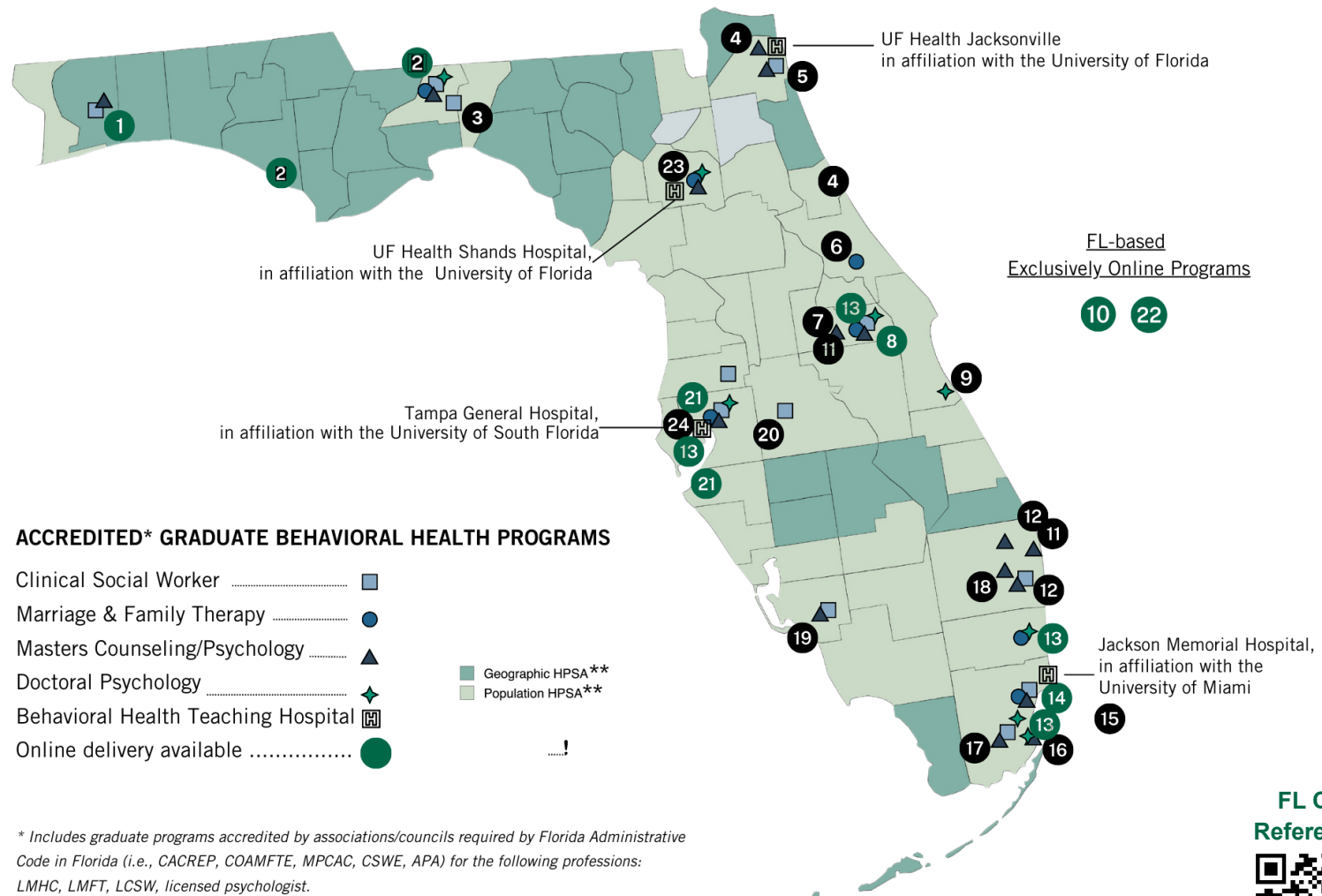
#### OTHER RELEVANT STATE/NATIONAL AGENCIES & INITIATIVES

Behavioral Health Education Center of Nebraska (BHECN)  
Behavioral Health Workforce Center Alliance (BHWCA)  
National Academy for State Health Policy; *Behavioral Health and Workforce*  
New Hampshire Primary Care Behavioral Health Workforce Initiative  
Substance Abuse and Mental Health Services Administration (SAMHSA)  
University of North Carolina Behavioral Health Workforce Research Center

---

**Note.** Engagement with accredited graduate behavioral health programs, accredited post-graduate behavioral health programs, and post-graduate behavioral health certification or specialization is not reflected in this table.

## Appendix C. Accredited Graduate Behavioral Health Programs



\* Includes graduate programs accredited by associations/councils required by Florida Administrative Code in Florida (i.e., CACREP, COAMFTE, MPCAC, CSWE, APA) for the following professions: LMHC, LMFT, LCSW, licensed psychologist.

\*\* Health provider shortage area (HPSA) as defined and determined by HRSA.



**(1!) UNIVERSITY OF WEST FLORIDA**

Master of Arts (M.A.) in Psychology, Concentration in  
Counseling

Master of Social Work (M.S.W.)

**(2!) FLORIDA STATE UNIVERSITY**

Master of Science (M.S.) / Educational Specialist (Ed.S.) in  
Career Counseling

Master of Science (M.S.) / Educational Specialist (Ed.S.) in  
Clinical Mental Health Counseling

Master of Social Work (M.S.W.)

Doctor of Philosophy (Ph.D.) in Clinical Psychology

Doctor of Philosophy (Ph.D.) in Combined Counseling –  
School Psychology

Doctor of Philosophy (Ph.D.) in Marriage & Family Therapy

**(3) FLORIDA AGRICULTURAL & MECHANICAL UNIVERSITY**

Master of Social Work (M.S.W.)

**(4) JACKSONVILLE UNIVERSITY**

Master of Science (M.S.) in Clinical Mental Health Counseling

**(5) UNIVERSITY OF NORTH FLORIDA**

Master of Science (M.S.) in Clinical Mental Health Counseling

Master of Social Work (M.S.W.)

**(6) STETSON UNIVERSITY**

Master of Science (M.S.) in Clinical Mental Health Counseling

Master of Science (M.S.) in Marriage, Couple & Family  
Counseling

**(7) ROLLINS COLLEGE**

Master of Arts (M.A.) in Clinical Mental Health Counseling

**(8!) UNIVERSITY OF CENTRAL FLORIDA**

Master of Arts (M.A.) in Clinical Psychology

Master of Arts (M.A.) in Counselor Education, Clinical Mental  
Health Counseling Track

Master of Arts (M.A.) in Marriage, Couple, & Family Therapy

Master of Social Work (M.S.W.)

Doctor of Philosophy (Ph.D.) in Education, Counselor  
Education Track

Doctor of Philosophy (Ph.D.) in Clinical Psychology

**(9) FLORIDA INSTITUTE OF TECHNOLOGY**

Doctor of Psychology (Psy.D.) in Clinical Psychology

**(10^) KEISER UNIVERSITY**

Master of Science (M.S.) in Clinical Mental Health Counseling

**(11) PALM BEACH ATLANTIC UNIVERSITY**

Master of Science (M.S.) in Clinical Mental Health Counseling

**(12) FLORIDA ATLANTIC UNIVERSITY**

Master of Education (M.Ed.) in Counselor Education, Clinical  
Mental Health Counseling Specialization

Master of Education (M.Ed.) in Counselor Education, Clinical  
Rehabilitation Counseling Specialization

Master of Social Work (M.S.W.)

Doctor of Philosophy (Ph.D.) in Counseling

**(13!) NOVA SOUTHEASTERN UNIVERSITY**

Master of Science (M.S.) in Counseling, Clinical Mental Health  
Counseling Concentration

Master of Science (M.S.) in Couple & Family Therapy

Doctor of Marriage & Family Therapy (D.M.F.T.)

Doctor of Philosophy (Ph.D.) in Clinical Psychology

Doctor of Psychology (Psy.D.) in Clinical Psychology

**... NOVA SOUTHEASTERN UNIVERSITY**

Doctor of Philosophy (Ph.D.) in Couple & Family Therapy  
Doctor of Psychology (Psy.D.) in School Psychology

**(14!) BARRY UNIVERSITY**

Master of Science (M.S.) in Clinical Mental Health Counseling  
Master of Science (M.S.) in Clinical Psychology  
Master of Science (M.S.) in Marital, Couple, & Family  
Counseling  
Master of Social Work (M.S.W.)  
Doctor of Philosophy (Ph.D.) in Counseling

**(15) ALBIZU UNIVERSITY, Miami Campus**

Doctor of Psychology (Psy.D.) in Clinical Psychology

**(16) UNIVERSITY OF MIAMI**

Master of Science in Education (M.S.Ed.) in Mental Health  
Counseling  
Doctor of Philosophy (Ph.D.) in Clinical Psychology  
Doctor of Philosophy (Ph.D.) in Counseling Psychology

**(17) FLORIDA INTERNATIONAL UNIVERSITY**

Master of Science (M.S.) in Counselor Education, Clinical  
Mental Health Counseling Major  
Master of Science (M.S.) in Counselor Education,  
Rehabilitation Counseling Major  
Master of Social Work (M.S.W.)  
Doctor of Philosophy (Ph.D.) in Clinical Psychology

**(18!) LYNN UNIVERSITY**

Master of Science (M.S.) in Clinical Mental Health Counseling

**(19) FLORIDA GULF COAST UNIVERSITY**

Master of Arts (M.A.) in Clinical Mental Health Counseling  
Master of Social Work (M.S.W.)

**(20) SOUTHEASTERN UNIVERSITY**

Master of Social Work (M.S.W.)

**(21!) UNIVERSITY OF SOUTH FLORIDA**

Master of Arts (M.A.) in Clinical Rehabilitation & Mental  
Health Counseling  
Master of Science (M.S.) in Marriage & Family Therapy  
Master of Social Work (M.S.W.)  
Doctor of Philosophy (Ph.D.) in Clinical Psychology  
Doctor of Philosophy (Ph.D.) in School Psychology

**(22^) SAINT LEO UNIVERSITY**

Master of Social Work (M.S.W.)

**(23) UNIVERSITY OF FLORIDA**

Master of Education (M.Ed.) & Educational Specialist (Ed.D.)  
in Marriage & Family Counseling  
Master of Education (M.Ed.) & Educational Specialist (Ed.D.)  
in Mental Health Counseling  
Doctor of Philosophy (Ph.D.) in Clinical Psychology  
Doctor of Philosophy (Ph.D.) in Counseling & Counselor  
Education  
Doctor of Philosophy (Ph.D.) in Counseling Psychology  
Doctor of Philosophy (Ph.D.) in School Psychology

**(24!) Florida School of Professional Psychology at National  
Louis University, Tampa**

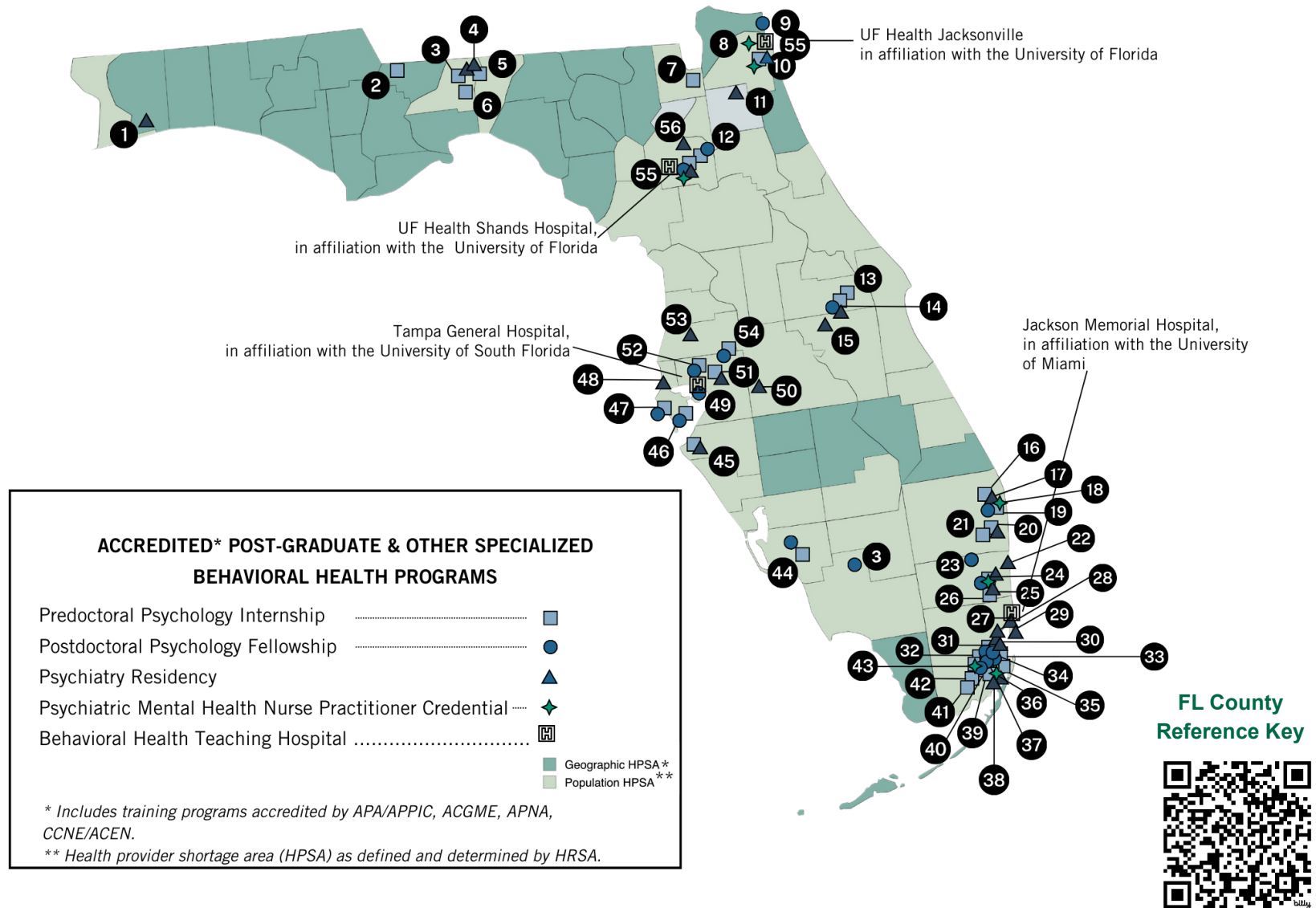
Master of Science (M.S.) in Counseling  
Doctor of Education (Ed.D.) in Counselor Education  
Doctor of Psychology (Psy.D.) in Clinical Psychology

*! Represents online delivery available for at least one  
clinical program.*

*^ Represents online delivery only.*

*Green text indicates engagement with program to date.*

## Appendix D. Accredited Post-Graduate & Other Specialized Behavioral Health Programs



**(1) WEST FLORIDA HOSPITAL- HCA HEALTHCARE**

Psychiatry Residency

**(2) FLORIDA STATE HOSPITAL**

Doctoral Internship in Psychology

**(3) FLORIDA STATE UNIVERSITY**

Doctoral Internship in Health Service Psychology

Doctoral Internship in Psychology

Postdoctoral Clinical Health Psychology Fellowship

Psychiatry Residency

**(4) HCA FLORIDA CAPITAL HOSPITAL- HCA HEALTHCARE**

Psychiatry Residency

**(5) FEDERAL BUREAU OF PRISONS – FCI TALLAHASSEE**

Doctoral Internship in Psychology

**(6) FLORIDA AGRICULTURAL & MECHANICAL UNIVERSITY**

Doctoral Internship in Psychology

**(7) NORTHEAST FLORIDA STATE HOSPITAL**

Doctoral Internship in Psychology

**(8) JACKSONVILLE UNIVERSITY**

Master of Science in Nursing with Specialty in Psychiatric Mental  
Nursing (MSN)

**(9) FLORIDA PSYCHOLOGICAL ASSOCIATES**

Postdoctoral Psychology Residency

**(10) UNIVERSITY OF NORTH FLORIDA**

Doctoral Internship in Health Service Psychology

Doctor of Nursing Practice (D.N.P.) Psychiatric – Mental

Health Nurse Practitioner (PMHNP) Track

**... UNIVERSITY OF NORTH FLORIDA**

Psychiatric – Mental Health Nurse Practitioner (PMHNP)  
Certificate

**(11) HCA FLORIDA ORANGE PARK HOSPITAL- HCA  
HEALTHCARE**

Psychiatry Residency

**(12) NORTH FLORIDA-SOUTH GEORGIA- VETERAN AFFAIRS  
HEALTHCARE SYSTEM**

Doctoral Internship in Psychology

Postdoctoral Psychology Residency

**(13) UNIVERSITY OF CENTRAL FLORIDA**

Doctoral Internship in Health Service Psychology

**(14) ORLANDO- VETERAN AFFAIRS HEALTHCARE SYSTEM**

Doctoral Internship in Psychology

Postdoctoral Psychology Fellowship

Psychiatry Residency

**(15) HCA FLORIDA OSCEOLA HOSPITAL- HCA HEALTHCARE**

Psychiatry Residency

**(16) WEST PALM BEACH- VETERAN AFFAIRS MEDICAL  
CENTER**

Doctoral Internship in Psychology

**(17) HCA FLORIDA JFK NORTH HOSPITAL- HCA HEALTHCARE**

Psychiatry Residency

**(18) PALM BEACH ATLANTIC UNIVERSITY**

Doctor of Nursing Practice with a Psychiatric Mental Health Nurse  
Track (DNP)

**(19) PALM BEACH COUNTY - YOUTH SERVICES DEPARTMENT**

Doctoral Internship in Psychology  
Postdoctoral Psychology Fellowship

**(20) FLORIDA ATLANTIC UNIVERSITY**

Doctoral Internship in Health Service Psychology  
Psychiatry Residency

**(21) FAULK CENTER FOR COUNSELING**

Doctoral Internship in Psychology

**(22) BROWARD HEALTH IMPERIAL POINT MEDICAL CENTER**

Psychiatry Residency

**(23) NEUROBEHAVIORAL INSTITUTE**

Postdoctoral Clinical Cognitive and Behavioral Psychology  
Residency

**(24) NOVA SOUTHEASTERN UNIVERSITY**

Doctoral Internship in Psychology (Psychology Services Center)  
Doctoral Internship in Psychology (South Florida Consortium)  
Postdoctoral Psychology Residency  
Master of Science in Nursing with Specialty in Psychiatric Mental  
Health (MSN)  
Postgraduate Advanced Practice Registered Nurse Certificate in  
Psychiatric-Mental Health  
Psychiatry Residency

**(25) MEMORIAL HEALTHCARE SYSTEM**

Psychiatry Residency

**(26) SOUTH FLORIDA STATE HOSPITAL**

Doctoral Internship in Psychology

**(27) HCA FLORIDA AVENTURA HOSPITAL- HCA HEALTHCARE**

Psychiatry Residency

**(28) SOUTHERN WINDS HOSPITAL**

Psychiatry Residency

**(29) MOUNT SINAI MEDICAL CENTER**

Psychiatry Residency

**(30) COMMUNITY HEALTH OF SOUTH FLORIDA**

Psychiatry Residency

**(31) CITRUS HEALTH NETWORK**

Doctoral Internship in Psychology  
Postdoctoral Psychology Residency Program  
Psychiatry Residency

**(32) ALBIZU UNIVERSITY**

Predoctoral Psychology Internship (Goodman Psychological  
Services Center)

**(33) JACKSON MEMORIAL HOSPITAL**

Doctoral Internship in Psychology  
Postdoctoral Health Service Psychology Fellowship

**(34) MAILMAN CENTER FOR CHILD DEVELOPMENT**

Predoctoral Clinical Psychology Internship  
Postdoctoral Clinical Child and Pediatric Psychology Fellowship

**(35) MIAMI-DADE COUNTY COMMUNITY ACTION AND HUMAN  
SERVICES DEPARTMENT**

Predoctoral Clinical Psychology Internship

**(36) UNIVERSITY OF MIAMI/JACKSON HEALTH SYSTEM**

Doctoral Internship in Health Service Psychology  
Post – Master’s Certificate in Psychiatric Mental Health  
Nursing  
[Psychiatry Residency](#)

**(37) MIAMI VA MEDICAL CENTER- VETERAN AFFAIRS  
HEALTHCARE SYSTEM**

Doctoral Internship in Psychology  
Postdoctoral Psychology Residency Program

**(38) LARKIN COMMUNITY HOSPITAL**

Psychiatry Residency

**(39) FENIX CENTER FOR PSYCHOLOGICAL SERVICES**

Doctoral Internship in Clinical Psychology

**(40) NICKLAUS CHILDREN'S HOSPITAL**

Doctoral Internship in Clinical Psychology

**(41) SOUTH FLORIDA EVALUATION AND TREATMENT CENTER**

Doctoral Internship in Psychology

**(42) FEDERAL BUREAU OF PRISONS- FCI MIAMI**

Doctoral Internship in Psychology

**(43) FLORIDA INTERNATIONAL UNIVERSITY**

Doctoral Internship in Psychology  
Postdoctoral Psychology Fellowship  
Master of Science in Nursing with Specialty in Psychiatric Mental  
Nursing (MSN)

**(44) FLORIDA GULF COAST UNIVERSITY**

Doctoral Internship in Health Service Psychology

**(45) CENTERSTONE CONSORTIUM**

Doctoral Internship in Health Service Psychology  
Psychiatry Residency

**(46) JOHNS HOPKINS ALL CHILDREN'S HOSPITAL**

Doctoral Internship in Psychology  
Postdoctoral Psychology Fellowship

**(47) BAY PINES VETERAN AFFAIRS HEALTHCARE SYSTEM**

Doctoral Internship in Psychology  
Postdoctoral Psychology Fellowship

**(48) HCA FLORIDA LARGO HOSPITAL- HCA HEALTHCARE**

Psychiatry Residency

**(49) TAMPA GENERAL HOSPITAL**

Postdoctoral Health and Rehabilitation Psychology Fellowship

**(50) LAKE LAND REGIONAL HEALTH**

Psychiatry Residency

**(51) UNIVERSITY OF SOUTH FLORIDA**

Doctoral Internship in Counseling Psychology  
Doctoral Internship in Professional Psychology  
[Psychiatry Residency Program](#)

**(52) JAMES A. HALEY VETERANS HOSPITAL- VETERAN  
AFFAIRS HEALTHCARE SYSTEM**

Predoctoral Psychology Internship  
Postdoctoral Clinical Psychology Residency  
Postdoctoral Clinical Neuropsychology Residency  
Postdoctoral Rehabilitation Psychology Residency

**(53) MORTON PLANT NORTH BAY RECOVERY CENTER-  
BAYCARE HEALTH SYSTEM**

Psychiatry Residency

**(54) FLORIDA DEPARTMENT OF CORRECTIONS -  
ZEPHYRHILLS CORRECTIONAL INSTITUTION**

Doctoral Internship in Clinical Psychology

Postdoctoral Internship in Clinical Psychology

**(55) UNIVERSITY OF FLORIDA GAINSEVILLE + JACKSONVILLE**

Doctoral Internship in Clinical Psychology

Doctoral Internship in Health Service Psychology

Postdoctoral Psychology Fellowship (Clinical and Health  
Psychology)

Postdoctoral Psychology Fellowship (Psychiatry)

Doctor of Nursing Practice (D.N.P.) Psychiatric – Mental  
Health Nurse Practitioner (PMHNP) Track

Psychiatry Residency

**(56) UCF GRADUATE MEDICINE EDUCATION (GME)  
CONSORTIUM- HCA HEALTHCARE**

Psychiatry Residency

*Green text indicates engagement with program to date.*

## Appendix E. Population-based Rates of Available Licensed Behavioral Health Providers by County

		(Number per 10,000 Residents)								
COUNTY	POPULATION	LMHC	LMFT	LCSW	LICENSED PSYCHOLOGIST	PMHNP	PSYCHIATRIST	THERAPY* SERVICES	MEDICATION* SERVICES	TOTAL
Alachua	284030	17.89	4.01	16.48	12.29	3.84	4.15	50.67	7.99	58.66
Baker	27803	7.55	0.36	1.80	0.00	1.80	0.36	9.71	2.16	11.87
Bay	185134	10.64	1.51	7.56	1.19	3.13	1.19	20.90	4.32	25.22
Bradford	27313	6.96	0.37	2.56	0.73	0.37	0.37	10.62	0.74	11.36
Brevard	630693	10.08	1.30	8.72	3.38	1.52	0.82	23.48	2.34	25.82
Broward	1947026	10.50	3.45	10.68	5.11	3.69	1.10	29.74	4.79	34.53
Calhoun	13464	3.71	0.00	2.23	0.74	0.00	0.00	6.68	0.00	6.68
Charlotte	202661	7.25	0.59	5.97	1.88	1.28	1.09	15.69	2.37	18.06
Citrus	162529	5.72	0.80	5.29	0.86	0.98	0.37	12.67	1.35	14.02
Clay	226589	9.58	1.19	7.19	1.59	2.47	0.57	19.55	3.04	22.59
Collier	397994	5.73	1.03	6.38	2.76	2.01	1.46	15.90	3.47	19.37
Columbia	71908	6.26	0.83	7.65	0.97	1.39	0.42	15.71	1.81	17.52
Desoto	35312	5.38	0.57	4.81	1.13	1.42	0.28	11.89	1.70	13.59
Dixie	17124	2.34	0.58	2.34	0.58	0.00	0.00	5.84	0.00	5.84
Duval	1016536	10.06	1.47	8.09	2.93	2.31	1.27	22.55	3.58	26.13
Escambia	324878	11.54	1.17	8.83	3.14	1.97	1.35	24.68	3.32	28.00
Flagler	126705	8.60	1.97	5.76	1.26	2.68	0.39	17.59	3.07	20.66
Franklin	12498	4.80	0.80	3.20	1.60	0.00	1.60	10.40	1.60	12.00
Gadsden	43403	5.53	0.69	7.37	5.53	2.53	0.23	19.12	2.76	21.88
Gilchrist	18992	3.69	0.00	2.63	0.00	1.58	0.53	6.32	2.11	8.43
Glades	12454	0.00	0.80	3.21	0.80	0.00	0.00	4.81	0.00	4.81
Gulf	15314	5.22	0.65	5.22	0.65	0.00	0.65	11.74	0.65	12.39
Hamilton	13217	3.78	1.51	0.76	0.00	1.51	0.00	6.05	1.51	7.56
Hardee	25645	2.73	0.00	1.56	0.39	0.39	0.00	4.68	0.39	5.07
Hendry	41339	2.66	0.24	1.94	0.48	0.48	0.00	5.32	0.48	5.80
Hernando	206896	4.79	1.11	6.33	0.63	2.32	0.53	12.86	2.85	15.71
Highlands	105618	4.73	1.14	3.03	1.23	0.95	0.47	10.13	1.42	11.55
Hillsborough	1513301	9.11	1.44	9.25	4.43	2.61	1.59	24.23	4.20	28.43
Holmes	19651	4.58	0.00	3.56	0.00	3.05	0.00	8.14	3.05	11.19
Indian River	167352	6.99	1.91	7.65	2.93	1.97	1.08	19.48	3.05	22.53
Jackson	48211	9.13	0.62	4.77	2.49	5.39	0.00	17.01	5.39	22.40
Jefferson	15042	6.65	0.00	8.64	1.33	1.99	0.00	16.62	1.99	18.61
Lafayette	7786	1.28	1.28	2.57	0.00	0.00	0.00	5.13	0.00	5.13

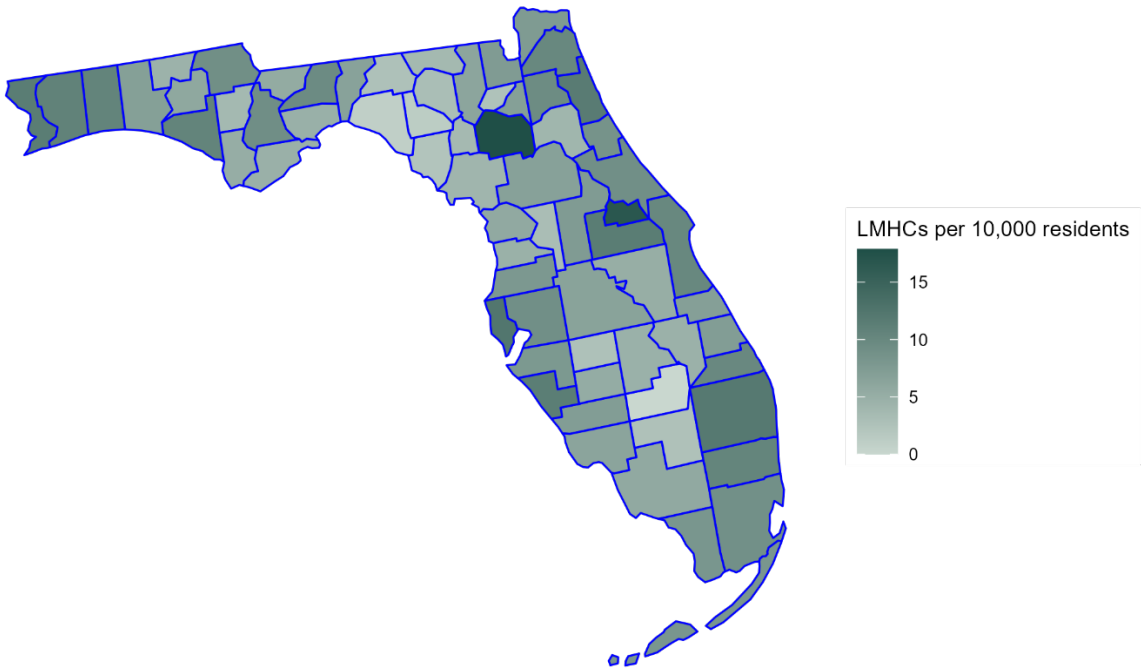
**Note.** \* "Therapy" includes LMHCs, LMFTs, LCSWs, and licensed psychologists. "Medication" includes PMHNPs and psychiatrists. Values in red represent <1.00 provider.



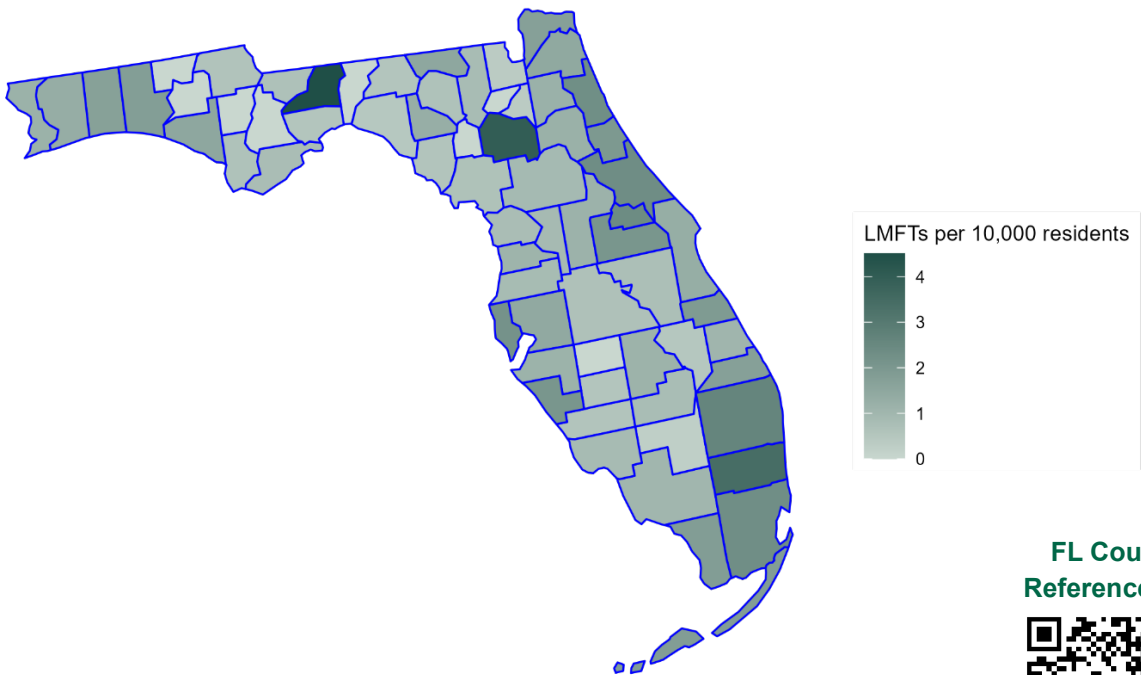
		(Number per 10,000 Residents)								
COUNTY	POPULATION	LMHC	LMFT	LCSW	LICENSED PSYCHOLOGIST	PMHNP	PSYCHIATRST	THERAPY* SERVICES	MEDICATION* SERVICES	TOTAL
Lake	410139	7.51	1.15	5.78	1.41	2.19	0.41	15.85	2.60	18.45
Lee	822453	6.37	0.86	6.48	2.13	2.14	0.91	15.84	3.05	18.89
Leon	297369	9.58	4.51	18.16	9.58	2.49	1.24	41.83	3.73	45.56
Levy	45260	4.20	0.66	3.76	0.22	1.55	0.22	8.84	1.77	10.61
Liberty	7603	9.21	0.00	3.95	2.63	2.63	0.00	15.79	2.63	18.42
Madison	18198	2.75	0.55	2.75	0.55	3.85	3.85	6.60	7.70	14.30
Manatee	429125	7.88	1.14	8.67	3.12	2.05	2.05	20.81	4.10	24.91
Marion	396415	6.76	0.91	5.68	1.51	1.84	0.50	14.86	2.34	17.20
Martin	162006	10.00	1.73	11.30	3.64	2.10	0.86	26.67	2.96	29.63
Miami-Dade	2673837	8.98	2.32	7.36	4.62	2.80	1.53	23.28	4.33	27.61
Monroe	81708	8.20	1.84	6.98	3.06	2.20	1.10	20.08	3.30	23.38
Nassau	97899	7.56	1.74	7.25	2.86	1.63	0.92	19.41	2.55	21.96
Okaloosa	216482	10.58	1.71	7.90	2.22	1.99	0.69	22.41	2.68	25.09
Okeechobee	40412	4.70	0.49	3.22	0.25	1.24	0.49	8.66	1.73	10.39
Orange	1452726	11.54	2.07	6.38	2.31	1.95	1.09	22.30	3.04	25.34
Osceola	422545	5.14	0.73	3.53	1.02	1.82	0.19	10.42	2.01	12.43
Palm Beach	1518477	11.99	2.61	13.52	5.17	2.46	1.77	33.29	4.23	37.52
Pasco	608794	7.93	0.85	7.62	2.20	2.23	0.48	18.60	2.71	21.31
Pinellas	961739	12.43	2.19	12.31	4.68	2.79	1.41	31.61	4.20	35.81
Polk	787404	6.57	0.67	4.51	1.02	1.45	0.52	12.77	1.97	14.74
Putnam	74731	4.15	1.20	3.08	0.94	0.40	0.00	9.37	0.40	9.77
Santa Rosa	198268	10.84	1.31	9.89	1.92	2.57	0.76	23.96	3.33	27.29
Sarasota	462286	11.42	2.08	12.14	4.15	2.14	1.34	29.79	3.48	33.27
Seminole	478772	16.75	2.40	9.32	3.70	1.98	1.13	32.17	3.11	35.28
St. Johns	306841	11.73	2.31	11.34	4.50	2.84	1.47	29.88	4.31	34.19
St. Lucie	358704	7.28	1.06	7.72	1.17	2.48	0.56	17.23	3.04	20.27
Sumter	144970	3.17	0.90	5.04	1.79	1.45	0.34	10.90	1.79	12.69
Suwannee	45411	3.08	0.66	3.30	1.10	1.10	0.00	8.14	1.10	9.24
Taylor	21283	0.94	0.47	0.94	0.47	0.47	0.00	2.82	0.47	3.29
Union	15460	2.59	0.00	2.50	0.65	0.00	0.00	5.74	0.00	5.74
Volusia	579192	9.10	2.35	6.70	1.95	1.86	0.67	20.10	2.53	22.63
Wakulla	35178	4.83	0.57	9.10	2.84	0.57	0.00	17.34	0.57	17.91
Walton	83304	6.96	1.80	4.92	1.68	1.08	1.32	15.36	2.40	17.76
Washington	25414	5.90	0.00	2.36	0.79	1.57	0.00	9.05	1.57	10.62

**Note.** \* "Therapy" includes LMHCs, LMFTs, LCSWs, and licensed psychologists. "Medication" includes PMHNPs and psychiatrists. Values in red represent <1.00 provider.

**Licensed Mental Health Counselors (LMHC)**



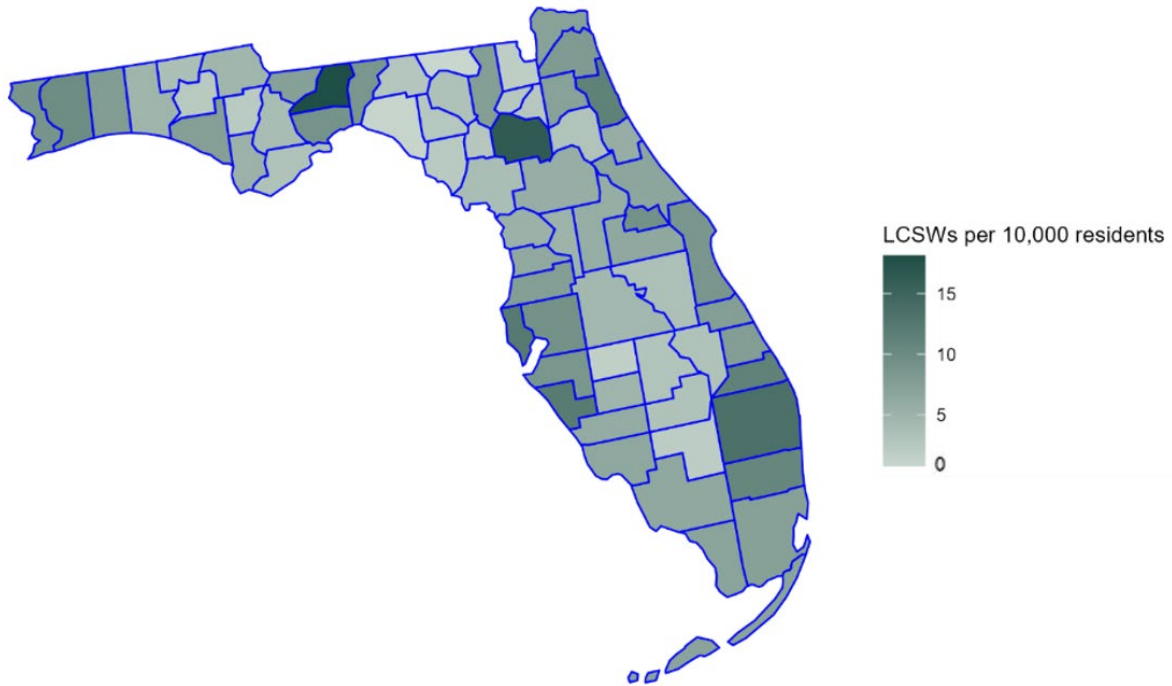
**Licensed Marital and Family Therapists (LMFT)**



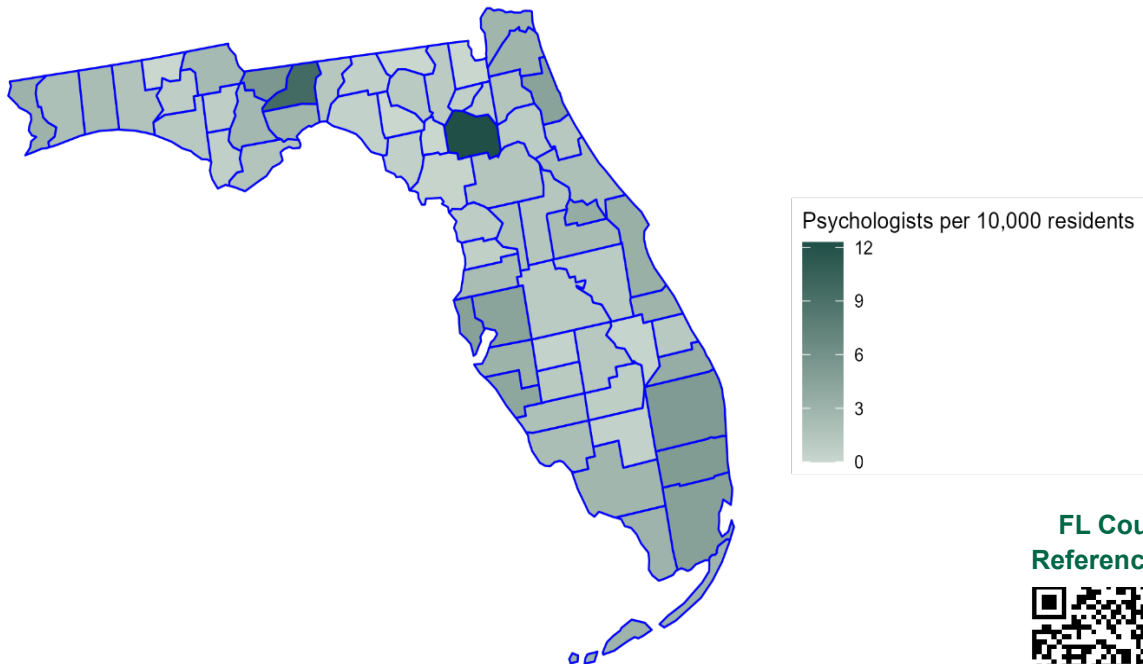
**FL County  
Reference Key**



## Licensed Clinical Social Workers (LCSW)



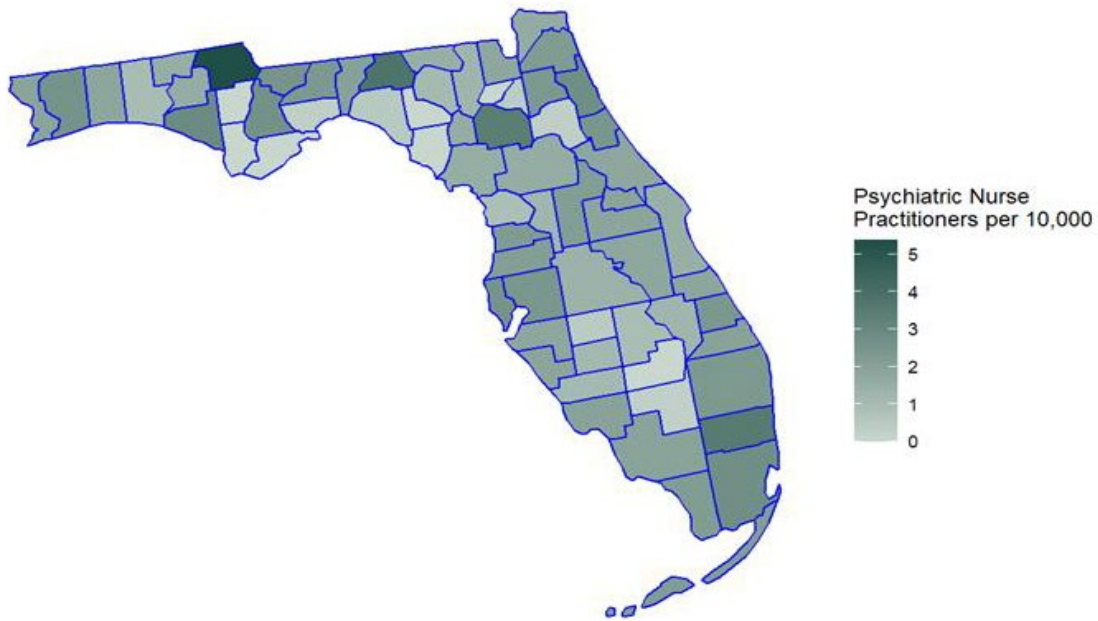
## Licensed Psychologists



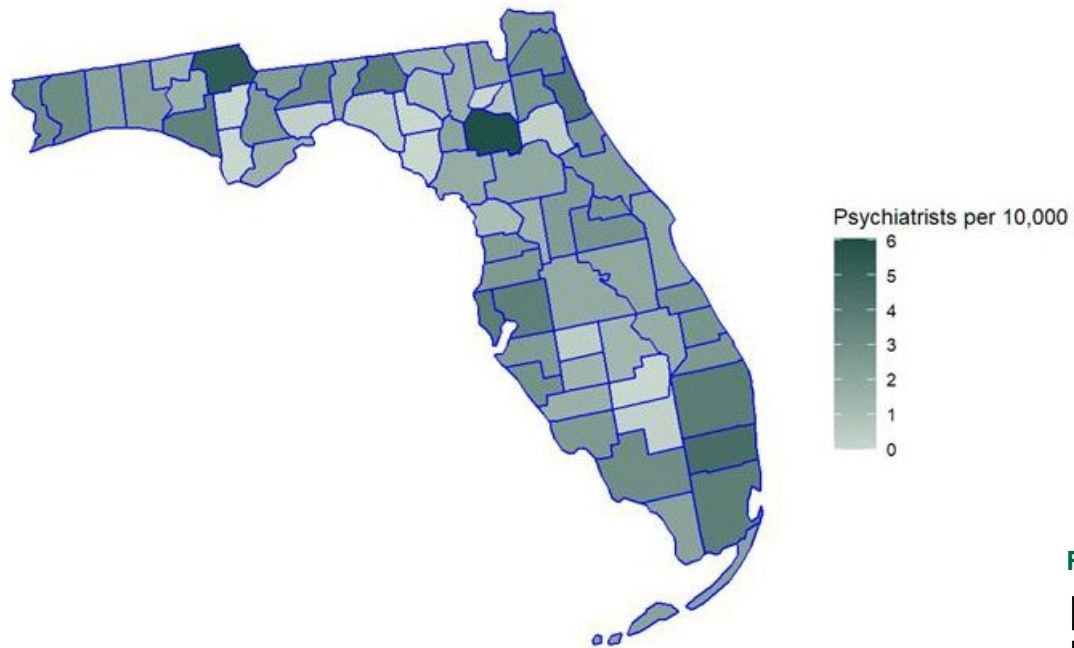
FL County  
Reference Key



## Psychiatric – Mental Health Nurse Practitioners (PMHNP)



## Psychiatrists



FL County  
Reference Key

